

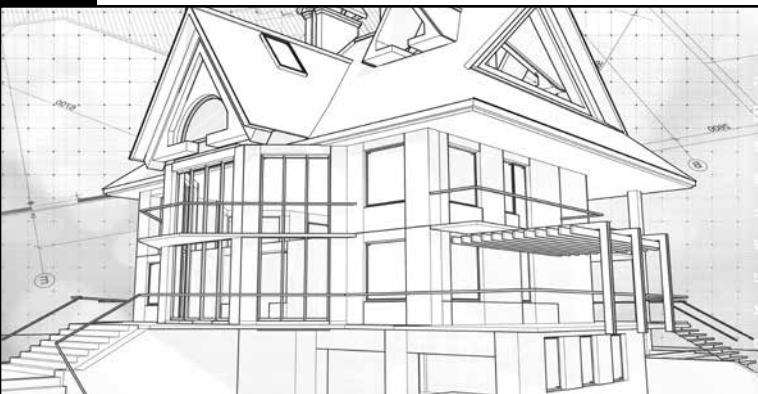
LAYING AND MAINTENANCE INSTRUCTIONS FOR POLISHED TILES



VALENTINO
CERAMICHE
PIEMME

ARCHITECTURAL SOLUTIONS

GRANITO PORCELLANATO
PIEMMEGRES



The **Piemme** and **PiemmeGRES** collections, in their fully polished versions such as, for example **“Marmi Reali”, “Purestone”, “Newstone”** and **“Geostone”** are highly prized materials for their elegance and brightness and there are a number of fundamental instructions to be followed for their installation, cleaning and maintenance.

This booklet will provide the instructions required for using the Piemme and PiemmeGRES fully-polished materials.

1) The project: starting off correctly

It is important to understand where fully-polished materials are best used, such as, for example, quality residential interiors, bathrooms or elegant sales premises. In highly trafficked areas such as main entrances, lobbies, etc. carpets and mats should be used to help clean shoe soles.

2) Installation: for real professional experts only

The installer is the last person responsible for ensuring a good job and should always be carefully selected. He must be told to follow a number of rules:

1. modern **plain cement base joints** are **highly recommended**,
2. epoxy-based grouting material is **not recommended**.

Before use, the installer must check the compatibility of the joint fillers with the polished Piemme/PiemmeGRES product. Once installation has been made, it is important to remove the excess joint filler while this is still fresh. The instructions provided by the manufacturers of grouting materials for polished and lapped products must be carefully followed and installation times and above all cleaning instructions must be abided by.

3) First cleaning: washing by installer after installation

After-installation washing is another operation of crucial importance. This is normally done only once by the installer before delivery of the finished job and before the floor is used. This first cleaning operation eliminates installation residues and normal worksite dirt. Washing must be thorough and carefully done using **plenty of clean water**; using dirty water would spoil the finished job.

Once the cement stucco curing time has passed, cleaning must be performed using detergent type Fila PS87 or the equivalent, **keeping scrupulously** to the instructions provided and the dilution ratios indicated on the manufacturer's pack.

Use Fila PS87 **diluted as per manufacturer's instructions**, possibly in warm water.

Before washing, vacuum/brush the floor well and then proceed to wash by spreading the diluted solution uniformly using a standard mop, or in the case of large surfaces, a floor cleaner with discs and green pad (SOFT).

Leave on for **a few minutes**. Rinse well **and with plenty of warm clean water**, repeating the operation as many times as necessary until any ring marks or residue are removed.

After installation and washing, in the event of imperfections been found, before doing any jobs, it is best to contact our dealer and/or our technical department.



4) Routine cleaning: no aggressive detergents with "bang / bam" effect

The purpose of routine cleaning is to remove common dirt and maintain the brightness of the fully-polished tiles. Such cleaning must always be done using **plenty of lukewarm water** and **standard neutral-based household detergents**. IMPORTANT : Even though some products say "no rinsing needed", it is always best to rinse. Avoid using excessively acid or basic products and abrasive sponges (no "bang / bam" effect products or the like). It is best not to use polishing machines and waxes. It is instead a good idea to use water and/or steam floor cleaners (use decalcified water), but only together with neutral detergents.



NOTE: As specified by the **UNI 11493.2013 standard, paragraph 5.2.2** : "visual inspection of the tiles must be performed at a minimum distance of 1.5 m at eye level. Sidelighting is not allowed. The surface effects not detectable in these conditions are not to be deemed faults".

Piemme disclaims all liability in the event of the above installation, cleaning and maintenance instructions not being followed.



VALENTINO
CERAMICHE
PIEMME

ARCHITECTURAL SOLUTIONS

GRANITO PORCELLANATO
PIEMMEGRES

Industrie Ceramiche Piemme S.p.A. via Del Crociale 42/44 - 41042 Fiorano - Modena - Italy
tel+39 0536 849111 fax+39 0536 849402
www.ceramichepiemme.it - dir.com@ceramichepiemme.it